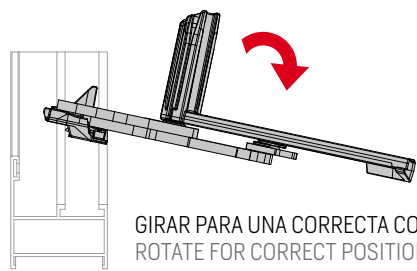
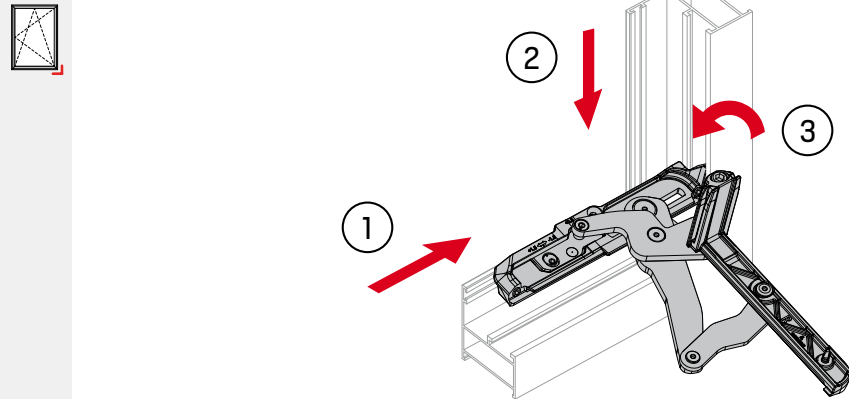


# STAC HERRAJE OSCILOBATIENTE TILT & TURN HARDWARE CH180 PLUS

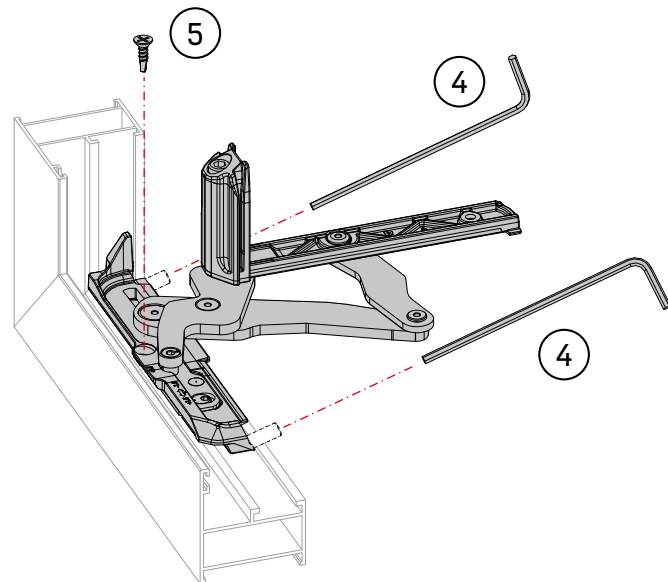
REFERENCIA REFERENCE	COMPÁS FRICTION STAY	APERTURA OPENING	HOJA SASH
H1213R1/L1	COMPÁS GRANDE LARGE FRICTION STAY	MANIOBRA TRADICIONAL TILT & TURN	ACTIVA ACTIVE
H1213R2/L2	COMPÁS GRANDE LARGE FRICTION STAY	MANIOBRA LÓGICA TILT-BEFORE-TURN	ACTIVA ACTIVE
H1213R3/L3	COMPÁS PEQUEÑO SMALL FRICTION STAY	MANIOBRA TRADICIONAL TILT & TURN	ACTIVA ACTIVE
H1213R4/L4	COMPÁS PEQUEÑO SMALL FRICTION STAY	MANIOBRA LÓGICA TILT-BEFORE-TURN	ACTIVA ACTIVE
H1214R/L	-	PRACTICABLE CASEMENT	PASIVA   ACTIVA PASSIVE   ACTIVE

## A BISAGRA INFERIOR | LOWER HINGE

ALLEN 2,5

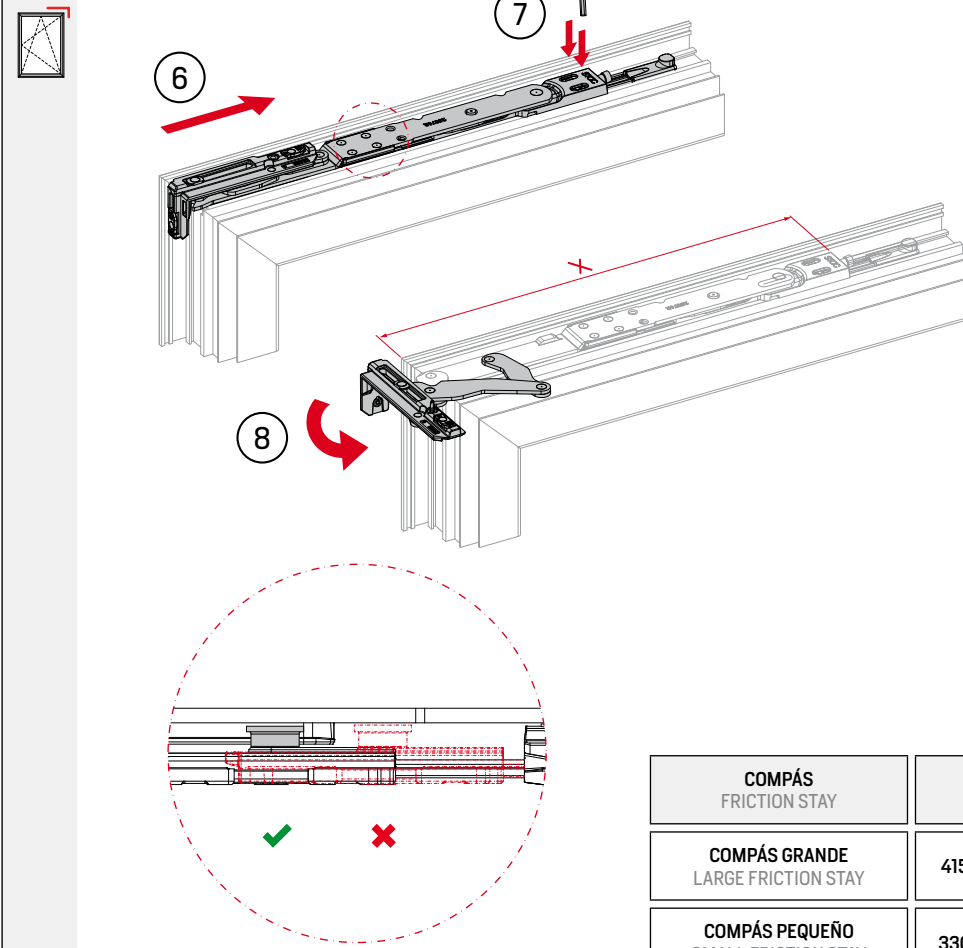


GIRAR PARA UNA CORRECTA COLOCACIÓN  
ROTATE FOR CORRECT POSITIONING



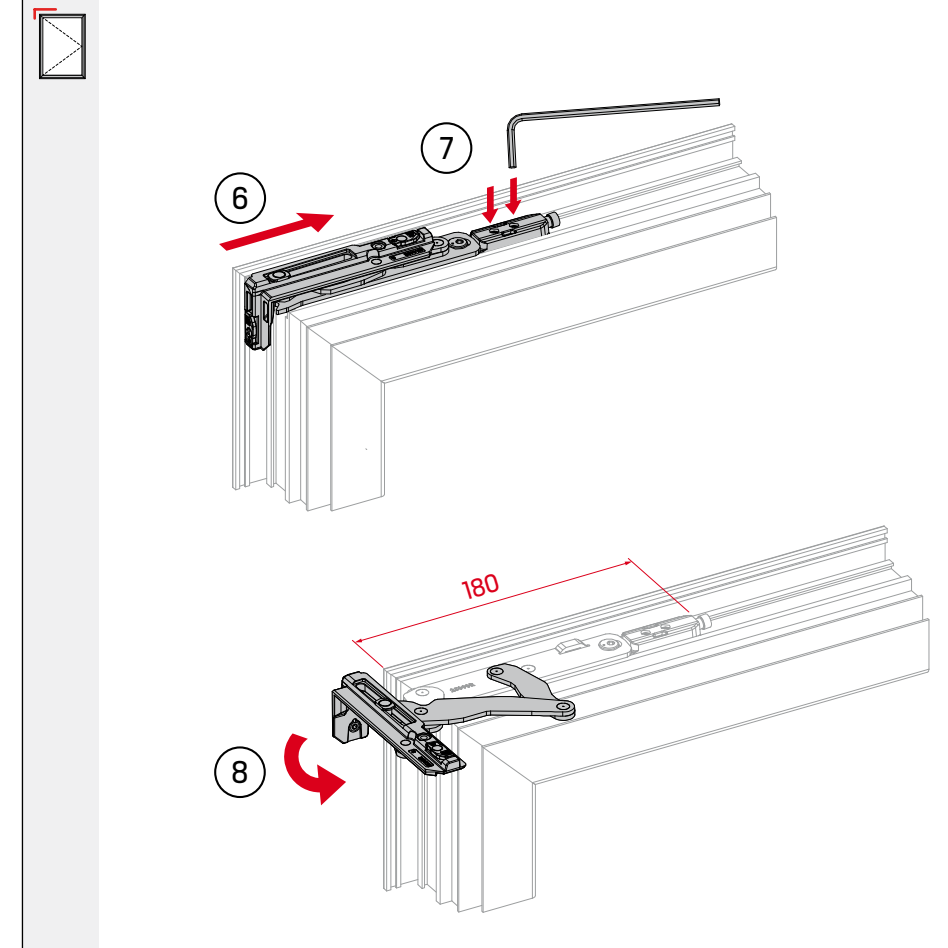
## B1 COMPÁS | FRICTION STAY

ALLEN 2,5

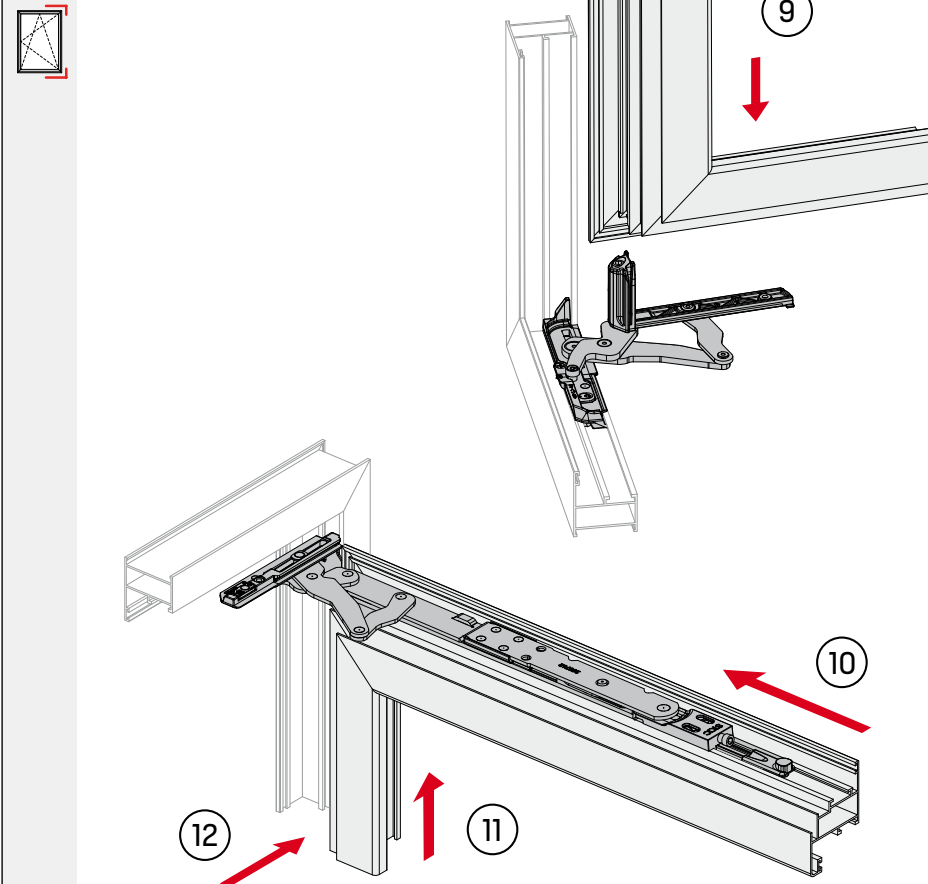


## B2 FALSO COMPÁS | TOP HINGE ADAPTER

ALLEN 2,5

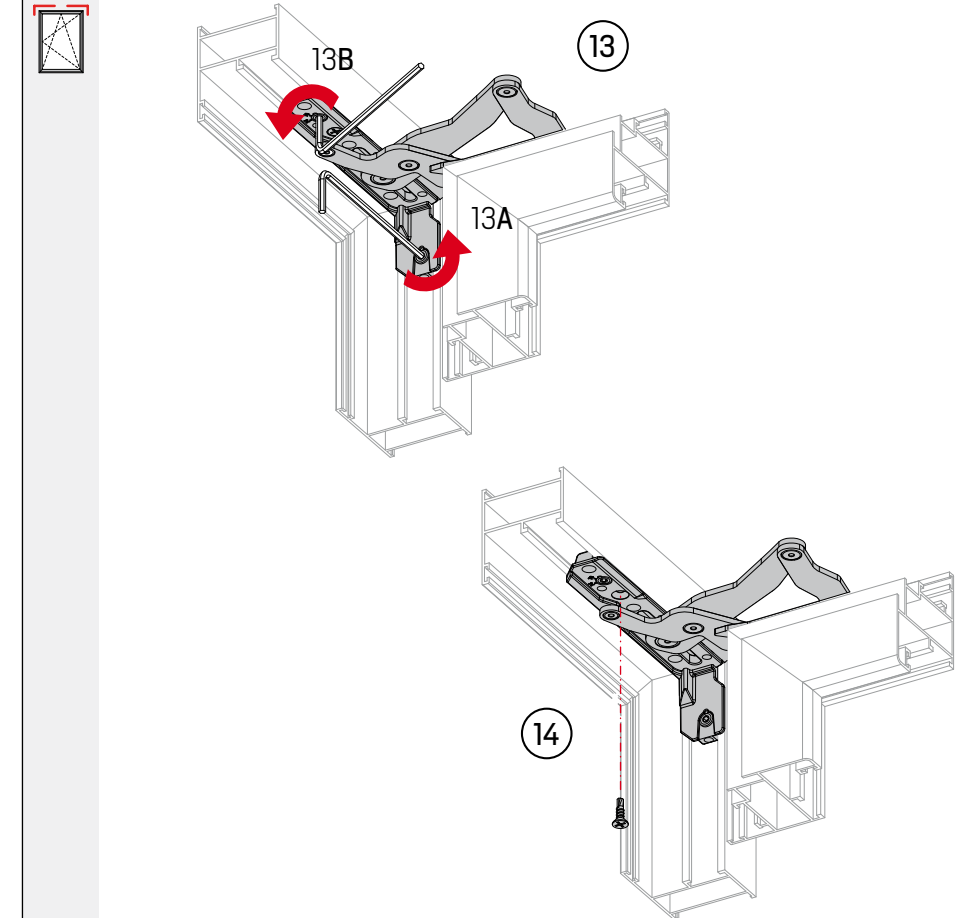


## C

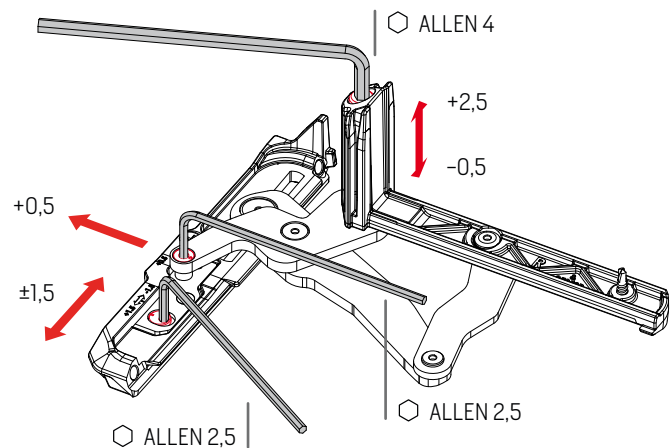


## D

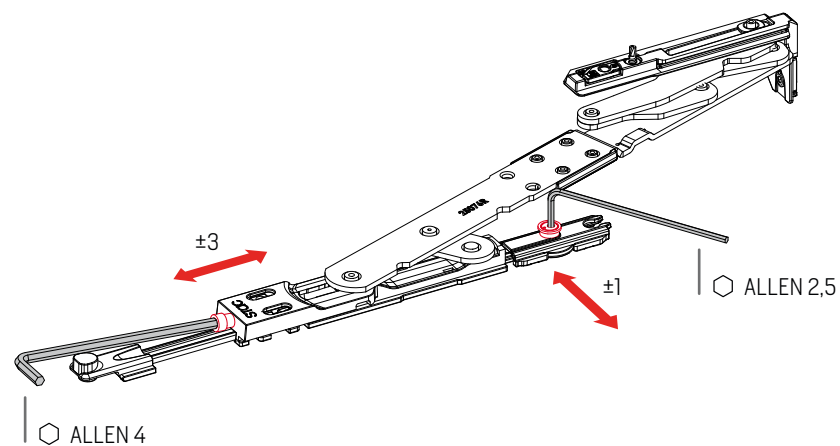
ALLEN 2,5



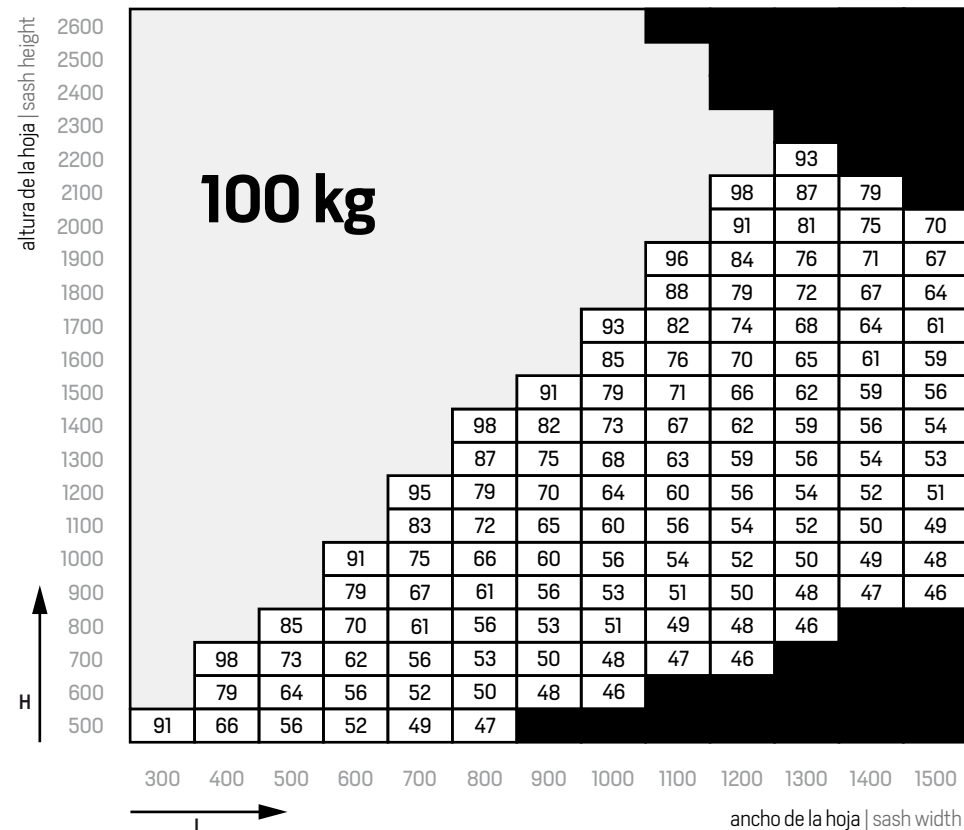
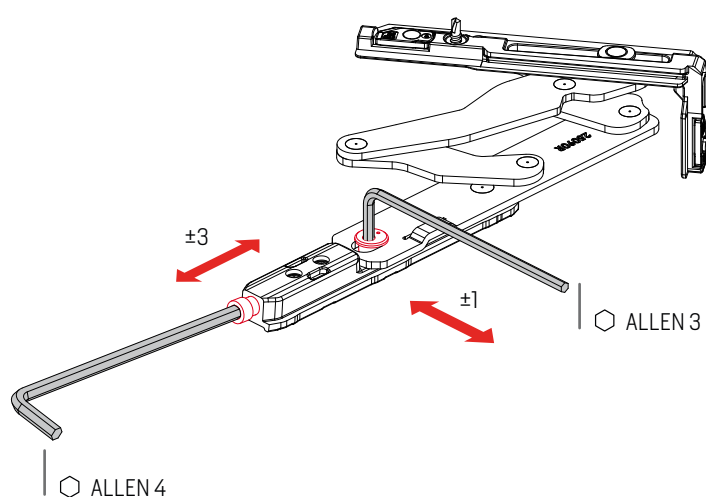
**BISAGRA INFERIOR**  
LOWER HINGE



**BISAGRA SUPERIOR DE HOJA ACTIVA**  
ACTIVE SASH UPPER HINGE



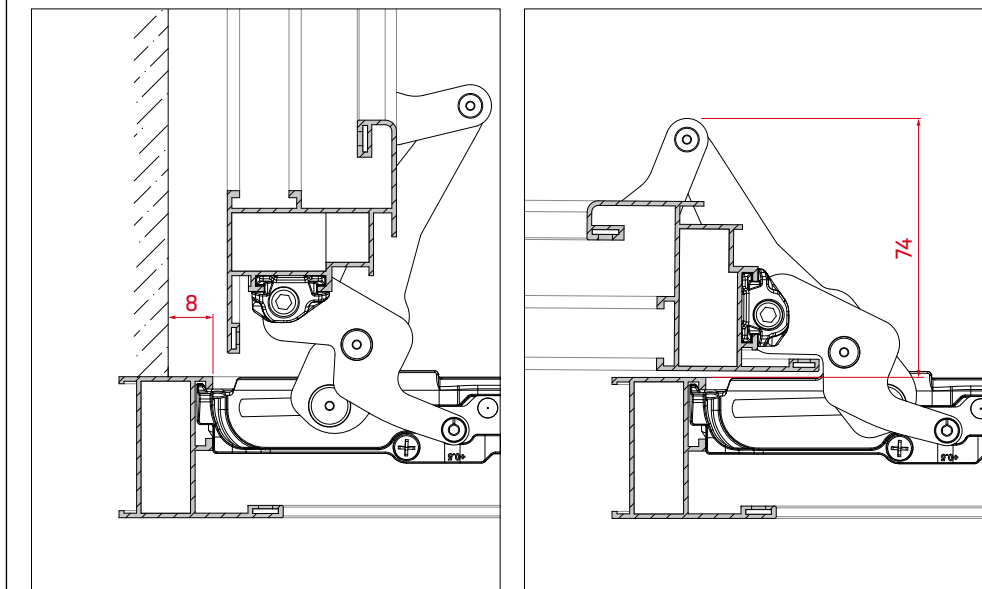
**BISAGRA SUPERIOR DE HOJA PASIVA**  
PASSIVE SASH UPPER HINGE



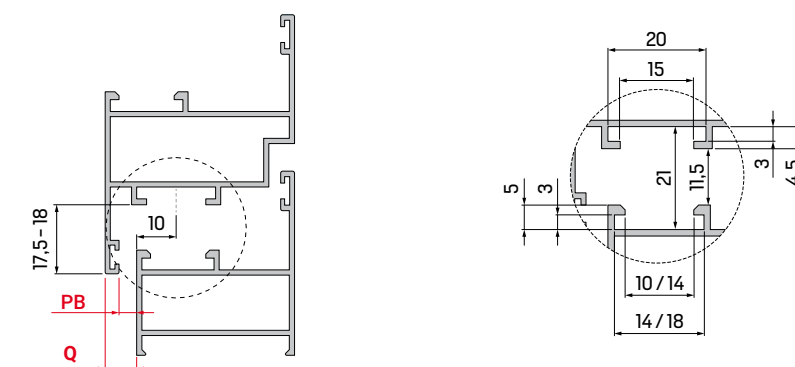
	Configuración con peso máximo Maximum weight configuration
XX	Configuración con limitación de peso Weight limitation configuration
	Configuraciones no realizables Configurations not possible

PARA CONFIGURACIONES DE VENTANA DE GRANDES DIMENSIONES Y PESOS CONSULTAR CON EL DEPARTAMENTO TÉCNICO DE STAC. ASIMISMO LA UBICACIÓN DE LA VENTANA O ALTURA DE LA CREMONA PUEDEN VARIAR LAS CONFIGURACIONES RECOMENDADAS. A PARTIR DE 1000 MM DE ALTO O ANCHO Y 80 KG DE PESO SE RECOMIENDA QUE EL PERFIL USADO SEA BALCONERA.

IN CASE OF CONFIGURATIONS NEEDED FOR WINDOWS WITH BIG DIMENSIONS AND WEIGHTS, STAC TECHNICAL DEPARTMENT SHOULD BE CONTACTED. FURTHERMORE, THE PLACEMENT OF THE WINDOWS OR CREMONES MAY ALSO LEAD TO CHANGES IN THE PROVIDED CONFIGURATIONS. FROM 1000 MM HIGH OR WIDE AND 80 KG WEIGHT IT IS RECOMMENDED THAT THE PROFILE USED BE A BALCONY PROFILE.



TIPOS DE CANAL | GROOVE TYPES



PB	MÁXIMO ÁNGULO DE APERTURA MAXIMUM OPENING ANGLE	Q	MÁXIMO ÁNGULO DE APERTURA MAXIMUM OPENING ANGLE
3	175°	< 9	180°
4,5	180°	9 - 10	155°
5,5	180°	10 - 12	130°

RESTRICCIONES SEGÚN COMPÁS | FRICTION STAY RESTRICTIONS

REFERENCIA   REFERENCE	L min	H min	X	kg Max.	MICROVENTILACIÓN   MICROVENTILATION	MICROVENTILACIÓN   MICROVENTILATION		
						L min	MV	MV
H1213R1/L1	590	550	130	100	L-516	638	490	L-567
H1213R2/L2						-	-	-
H1213R3/L3	505	550	90	100	L-432	553	406	L-483
H1213R4/L4						-	-	-
H1214R/L	300	300	-	100	-	-	-	-
H1213R1 + A130301	930	550	130	100	L-616	1000	490	L-667
H1213R2 + A130301	1220	550	130	100	L-986 / 325	-	-	-